

GRANDSTAND

KINGMAKER ROOM

Located on the second floor of the Main Grandstand offering flexibility to accommodate a meetings, conferences, dinner or reception for up to 80 people.



THEATRE

30



BOARDROOM

18



CABARET

-



CLASSROOM

-



DINNER

60



DINNER DANCE

40



U SHAPE

-



RECEPTION

80

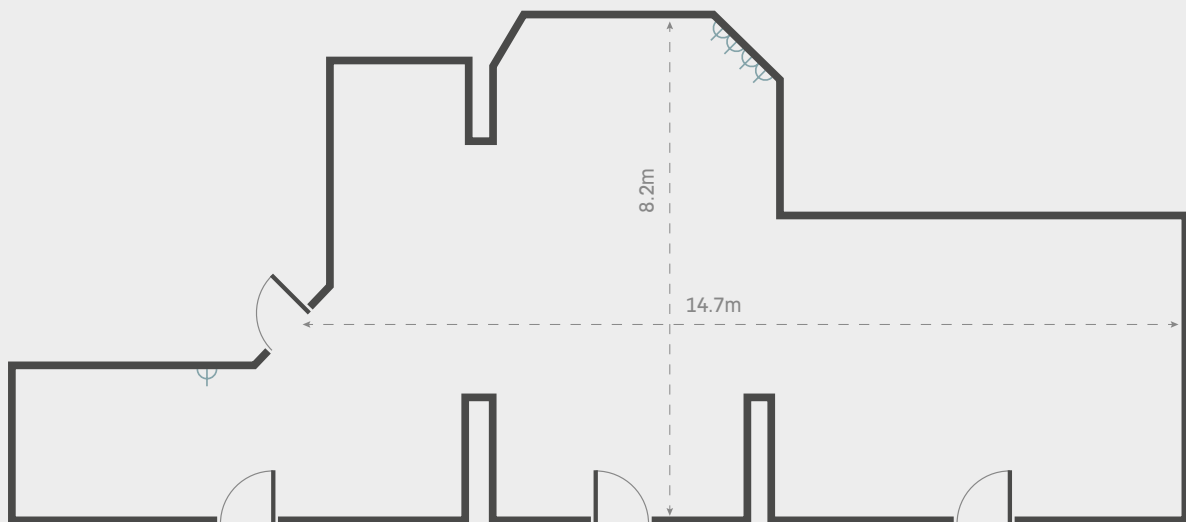


13A SOCKET

USEABLE SPACE DIMENSIONS

CEILING HEIGHT 3M

FLOOR PLAN



CONTACT US ON: 01926 405 560 | EVENTS@WARWICKRACECOURSE.COM

