




MAKERFIELD STAND

PARK SUITE

Located on the second floor of the Makerfield Stand and offering superb views over the racecourse, the newly refurbished Park Suite is the ideal choice for those looking for an impressive, modern space catering for up to 500 delegates. This large room can also be split into three sections each holding approximately 150 delegates.

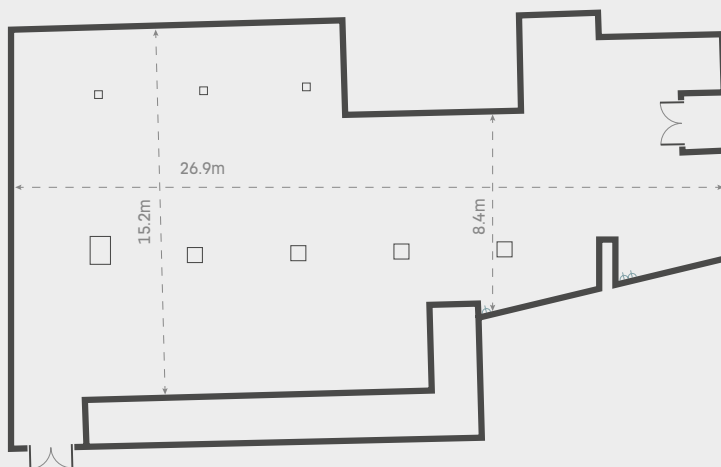


	THEATRE	500
	BOARDROOM	-
	CABARET	350
	CLASSROOM	-
	DINNER	450
	DINNER DANCE	420
	U SHAPE	-
	RECEPTION	500

 13A SOCKET

-- USEABLE SPACE DIMENTIONS
CEILING HEIGHT 3.4M

FLOOR PLAN



CONTACT US ON: 01942 402623 | NORTHWESTEVENTS@THEJOCKEYCLUB.CO.UK